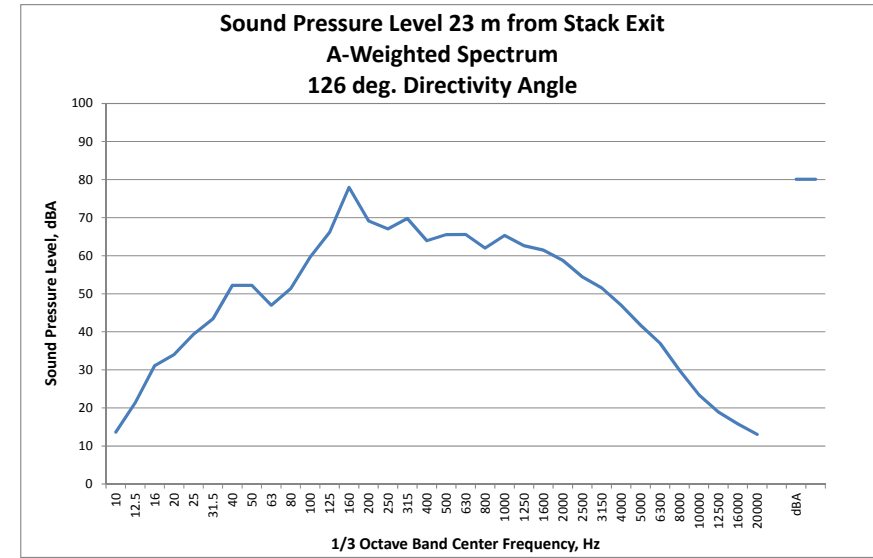
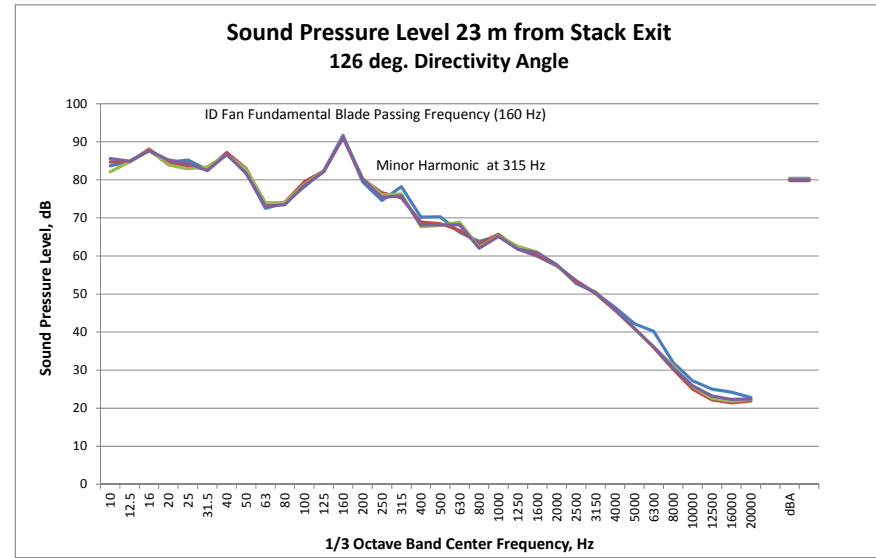
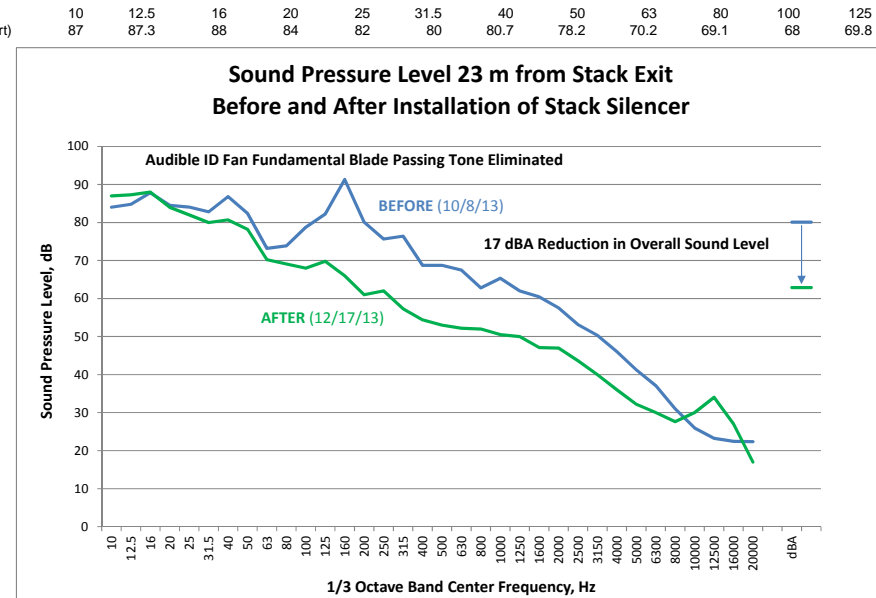


	10	12.5	16	20	25	31.5	40	50	63	80	100	125	160	200	250	315	400	500	630	800	1000	1250	1600	2000	2500	3150	4000	5000	6300	8000	10000	12500	16000	20000	dBA	
23 m from Stack Exit	83.7	84.8	87.6	84.6	85.2	82.7	86.7	82.1	72.5	74	78.2	82.3	91.7	79.5	74.6	78.2	70.2	70.3	66.2	63.8	65.2	61.8	59.9	57.4	53.5	50.3	46.5	42.2	40.2	32	27.2	25	24.2	22.8	80.4	80.4
23 m from Stack Exit	84.7	84.7	88.1	84.4	83.7	82.8	87.2	83	73.3	74.1	79.5	82.3	91	80.2	76.6	75.3	68.9	68.5	66.7	63.2	65.7	62	60.2	57.5	53.4	50.1	45.7	41	35.9	30.2	25	22.2	21.4	21.9	79.8	79.8
23 m from Stack Exit	82.1	84.7	87.8	83.9	82.9	83.4	86.6	82.8	74	74	78.8	82.3	91.4	80.4	76	76.3	67.7	68	68.9	62.3	65.3	62.5	61	57.6	52.7	50.6	45.8	40.8	36.1	31.2	25.7	22.6	21.8	22.3	80.2	80.2
23 m from Stack Exit	85.6	84.9	87.7	85.2	84.4	82.4	86.7	81.7	73	73.5	78.5	82.1	91.3	80.2	75.4	75.8	68.2	68.2	68.2	62	65.1	61.8	60.8	57.7	52.9	50.3	46	41	36.1	30.5	25.9	23.2	22.3	22.4	80	80
Average Lp at 23 m	84.0	84.8	87.8	84.5	84.1	82.8	86.8	82.4	73.2	73.9	78.8	82.3	91.4	80.1	75.7	76.4	68.8	68.8	67.5	62.8	65.3	62.0	60.5	57.6	53.1	50.3	46.0	41.3	37.1	31.0	26.0	23.3	22.4	22.4	80.1	80.1
A-wtg	-70.4	-63.4	-56.7	-50.5	-44.7	-39.4	-34.6	-30.2	-26.2	-22.5	-19.1	-16.1	-13.4	-10.9	-8.6	-6.6	-4.8	-3.2	-1.9	-0.8	0	0.6	1	1.2	1.3	1.2	1	0.5	-0.1	-1.1	-2.5	-4.3	-6.6	-9.3		
Average Lp	13.6	21.4	31.1	34.0	39.4	43.4	52.2	52.2	47.0	51.4	59.7	66.2	78.0	69.2	67.1	69.8	64.0	65.6	65.6	62.0	65.3	62.6	61.5	58.8	54.4	51.5	47.0	41.8	37.0	29.9	23.5	19.0	15.8	13.1	80.1	80.1



n from Stack AFTER Retrofit (Est. from Chart)



	10	12.5	16	20	25	31.5	40	50	63	80	100	125	160	200	250	315	400	500	630	800	1000	1250	1600	2000	2500	3150	4000	5000	6300	8000	10000	12500	16000	20000	dBA	
	87	87.3	88	84	82	80	80.7	78.2	70.2	69.1	68	69.8	66	61	62	57.3	54.4	53	52.2	52	50.5	50	47.1	47	43.6	40	36	32.2	30	27.6	30	34	27	17	62.9	62.9